

CH9549 Ford 6.0L & 6.4L Powerstroke Diesel Filter Design Change Notification

FRAM HD
08-1-12: 002

CH9549 Ford 6.0L & 6.4L Powerstroke Diesel filter design has changed. See details below and for comparative images.

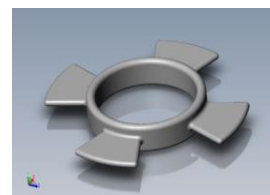
Note: Overall fit and function are not affected

External Differences:

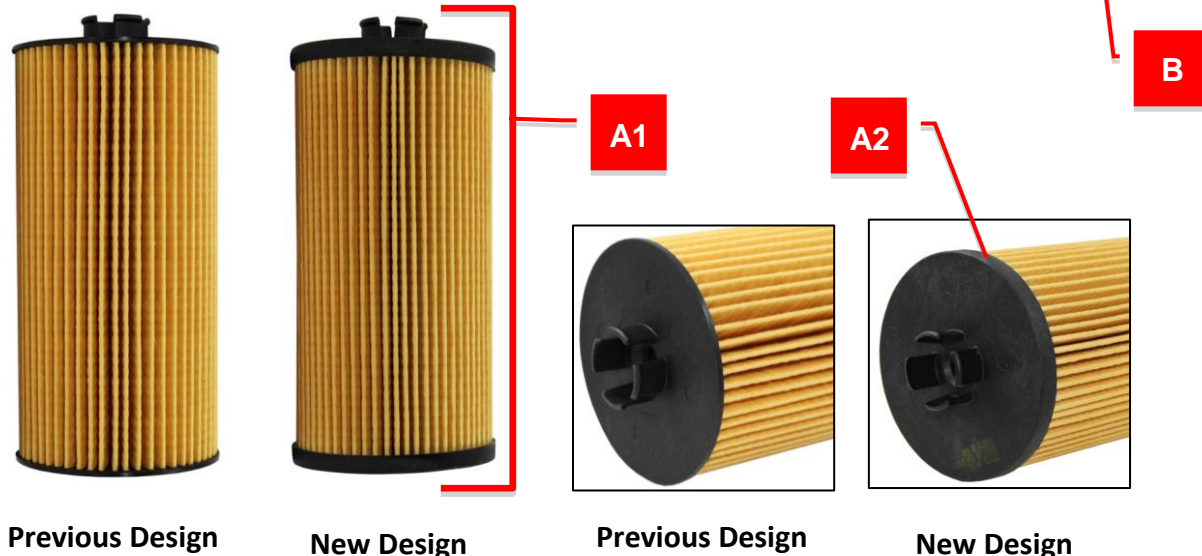
- A.** Compared to the previous design, the CH9549 has the same overall length (A1) but, the end cap design has an added lip (A2).

Internal Differences:

- B.** This CH9549 comes with an additional core adaptor kit. Please refer to installation instruction sheet that comes with the filter that is required for proper installation (see page 2 of this bulletin for the same instructions).



Profile Comparison: New Design vs. Previous Design



Features & Benefits:

- CH9549 design meets the previous design for fit and function.
- Core adaptor kit allows universal application for all housing styles.

Core Adaptor Installation Instructions:



-IMPORTANT! - First Determine Housing Style Before Servicing (Style A or Style B)

Service Instructions:



4. With core adapter in position (See Fig. 2) press core adapter firmly to snap in place. (See Fig. 3)

1. A style 3 "Core Adapter" is required to service Style A housings. (See illustrations above). To service Style A housings proceed to Step 2. To service Style B housings discard the core adapter and proceed to Step 5.



2. If a style 1 core adapter has been installed, proceed to step 5. If a style 2 adapter has been installed, remove it before continuing to step 3.
3. Align the holes on the top of the core assembly between the wings of the new core adapter. (See Fig. 1)



5. Remove the old O-ring, lubricate new O-ring with clean oil and install on cap.
6. Install filter element and threaded cap.
7. Tighten cap to 18.5 ft-lbs.